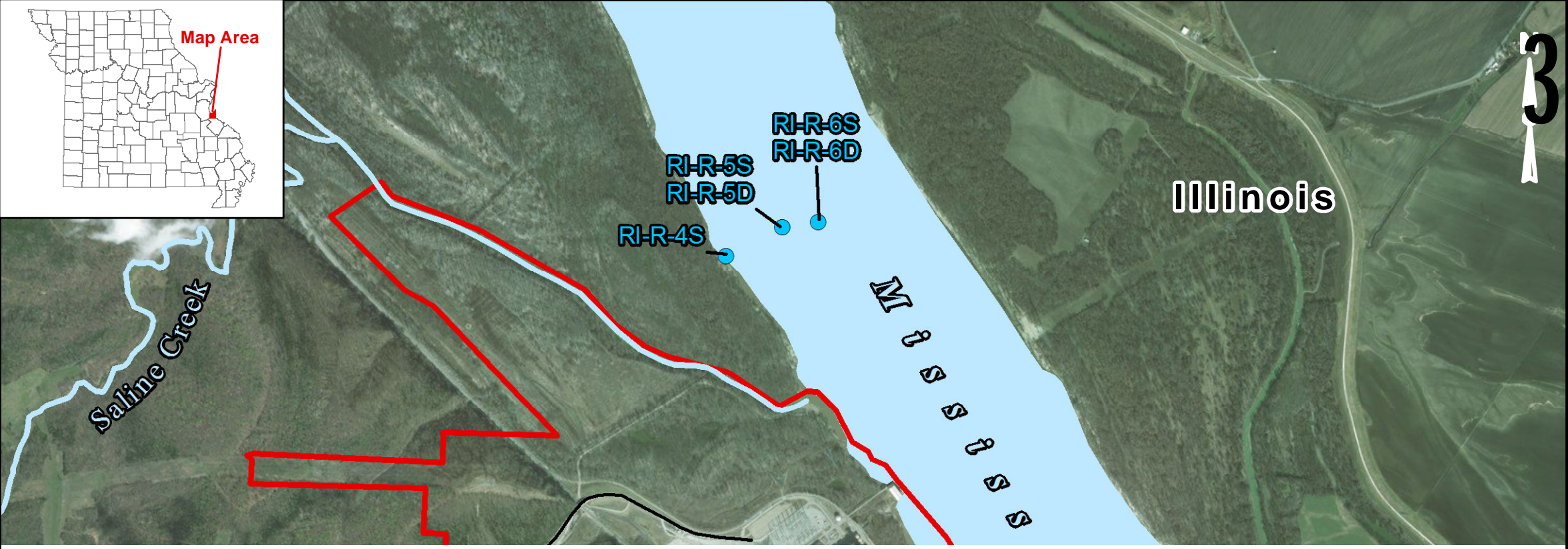


Map Area



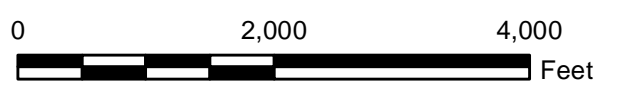
TITLE

SURFACE WATER SAMPLING LOCATIONS

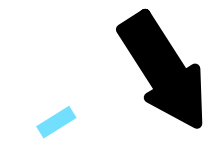
- LEGEND**
- Rush Island Property Boundary
 - Surface Water Sample Location
 - Ameren NPDES Outfall

- NOTES**
- 1.) All boundaries and locations are approximate.
 - 2.) Sample locations for surface water samples were obtained during sampling using a Trimble GeoXH GPS unit.
 - 3.) NPDES outfall location based on MEGA database.

- REFERENCES**
- 1.) Ameren, 2012. Ameren Missouri Rush Island Energy Center, Rush Island Property Control Map, January 2012.
 - 2.) MEGA. 2007. Missouri Environmental Geology Atlas. A Collection of Statewide Geographic Information System Data.
 - 3.) COORDINATE SYSTEM: NAD 1983 StatePlane Missouri East FIPS 2401 Feet.



Missouri



PROJECT

AMEREN MISSOURI RUSH ISLAND ENERGY CENTER
JEFFERSON COUNTY, MISSOURI

	PROJECT No. 130-1560		RIEC - Figure 4.mxd	
	DESIGN	-	SCALE:	AS SHOWN
	GIS	JSI	6/4/2014	REV. 3
	CHECK	MWD	6/5/2014	FIGURE 4
REVIEW	MNH	6/15/2014		

Service Layer Credits: © 2018 Microsoft Corporation © 2018 DigitalGlobe ©CNES (2018) Distribution Airbus DS

Map Document: G:\Projects\130\Projects\130\Figures - MO\800 - FIGURES-DRAWINGS\PRODUCTION\2017-2018 HHERA Figures\Rush Island\RIEC - Figure 4.mxd / Modified 2/12/2018 4:37:00 PM by jingram / Exported 2/12/2018 4:37:06 PM by jingram

ATTACHMENT A

Constituents Present in Coal Ash and in Our Natural Environment

ATTACHMENT B

Rush Island Energy Center Dilution Factor Calculations